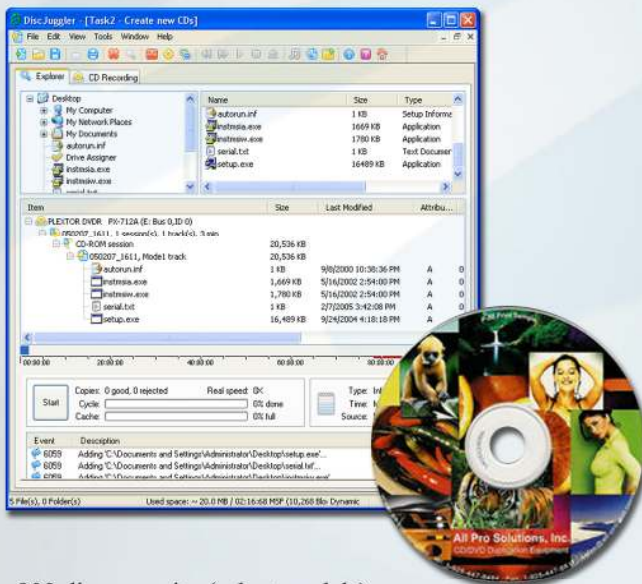


Established standards and low cost CD/DVD recorders and media are responsible for the success of CD/DVD recording technology. Burning CD/DVDs with a single recorder is time consuming, and changing media manually often is not acceptable. This situation requires recording systems to offer not only capabilities for CD/DVD duplication, but also for integrated direct-to-disc printing. Apollo Series CD/DVD Duplicators offer a professional solution to all these demands.

The Apollo Duplicator is a fully automated CD/DVD Duplicator which connects to the customer's existing PC. The Apollo series duplicators can be configured with 2 drives with up to 330 capacity, 4 drives with up to 630 capacity, and 7 drives with up to 900 capacity including all the disc printers we carry, making for a very cost effective machine to complete any DVD or CD production job.



Model Shown: Apollo 7T

- Up to 900 disc capacity (select models).
- Smartest-Fastest-Strongest Duplicators.
- 3 year warranty on the autoloader, industry-leading.
- Fastest loading/unloading system in the industry.
- Works 24/7 without interruption.
- Mechanical picker that doesn't pick up multiple discs.
- Optional business card (oval) and 80mm mini disc adapter.
- CD towers exchangeable with DVD towers.
- Exchangeable inkjet or thermal printers.
- Removable Hoppers (select models).
- Networkable.
- Shipped in 3 boxes: one for the autoloader, one for tower with drives and one for the printer, making it easy for shipping and service.
- Small footprint and simple design.
- Fast and quiet autoloader.
- Excellent technical support; most of it done by phone.

Software Options

DiscJuggler.NET

- Unlimited number of connections.
- Job queuing and priority setting.
- Login user administration.
- HTML user job management

Hexalock Copy Protection

- Add data onto already created CD-RX media.
- Create CD-RX media and add data in the same process.
- Copy-only capability.

Discribe MAC-based Software

- Operate select systems from a MAC.
- Copy and print capabilities.
- CD and DVD duplication.



System Requirements

CPU

AMD AthlonXP, AMD Athlon64, Intel Celeron 800Mhz or higher, Intel Pentium III 800Mhz or higher, Intel Pentium 4.

Motherboard

Must contain Intel i815, Intel i845, Intel i850, Intel i865, Intel i875, nVIDIA nForce2, or nVIDIA nForce3 chipsets. Examples: AOpen MX3S series, ASUS CUSL2 series, ASUS A7N8X Deluxe. *NOTE* -Motherboard must have 1 working "Com Port" for Autoloader connection.

Memory

Minimum of 256 megabytes. should be higher if a large number of drives are in the system. Examples: PC133 SDRAM, PC2100 DDR, PC2700 DDR, PC32000 DDR, PC800 RDRAM.

Firewire Host Adapter

Must contain NEC or Texas Instruments chipsets. Examples: Adaptec, IOI-1394, Maxtor, Orange Micro.

Hard Drive

A fast, non-recalibrating hard disk 7200 RPM or better with 8 MB Cache (avg. access time < 15 msec, transfer rate > 600 KB/second), Big enough for applications and data for Burning DVDs (at least 5 GB free space).

Product Configurations



2 Drives
Lex440 Inkjet Printer
220 Disc Capacity

2 Drives
HP Inkjet Printer
220 Disc Capacity

2 Drives
Pro III Thermal Printer
330 Disc Capacity

2 Drives
Prism Plus
Thermal Printer
330 Disc Capacity

2 Drives
P55 Dye Sublimation
Thermal Printer
220 Disc Capacity

2 Drives
Z6 Inkjet Printer
220 Disc Capacity



4 Drives
Lex440 Inkjet Printer
420 Disc Capacity

4 Drives
HP Inkjet Printer
420 Disc Capacity

4 Drives
Pro III Thermal Printer
630 Disc Capacity

4 Drives
Prism Plus
Thermal Printer
630 Disc Capacity

4 Drives
P55 Dye Sublimation
Thermal Printer
420 Disc Capacity

4 Drives
Z6 Inkjet Printer
420 Disc Capacity



7 Drives
Lex440 Inkjet Printer
600 Disc Capacity

7 Drives
HP Inkjet Printer
600 Disc Capacity

7 Drives
Pro III Thermal Printer
900 Disc Capacity

7 Drives
Prism Plus
Thermal Printer
900 Disc Capacity

7 Drives
P55 Dye Sublimation
Thermal Printer
600 Disc Capacity

7 Drives
Z6 Inkjet Printer
600 Disc Capacity

“We are the source for all your CD and DVD duplication and printing needs!”

All Pro Solutions